

PART OF N.W. 1/4 OF SEC. 28, T.7N., R.1W., S.L.B.&M.  
**LOMOND ACRES SUBDIVISION**

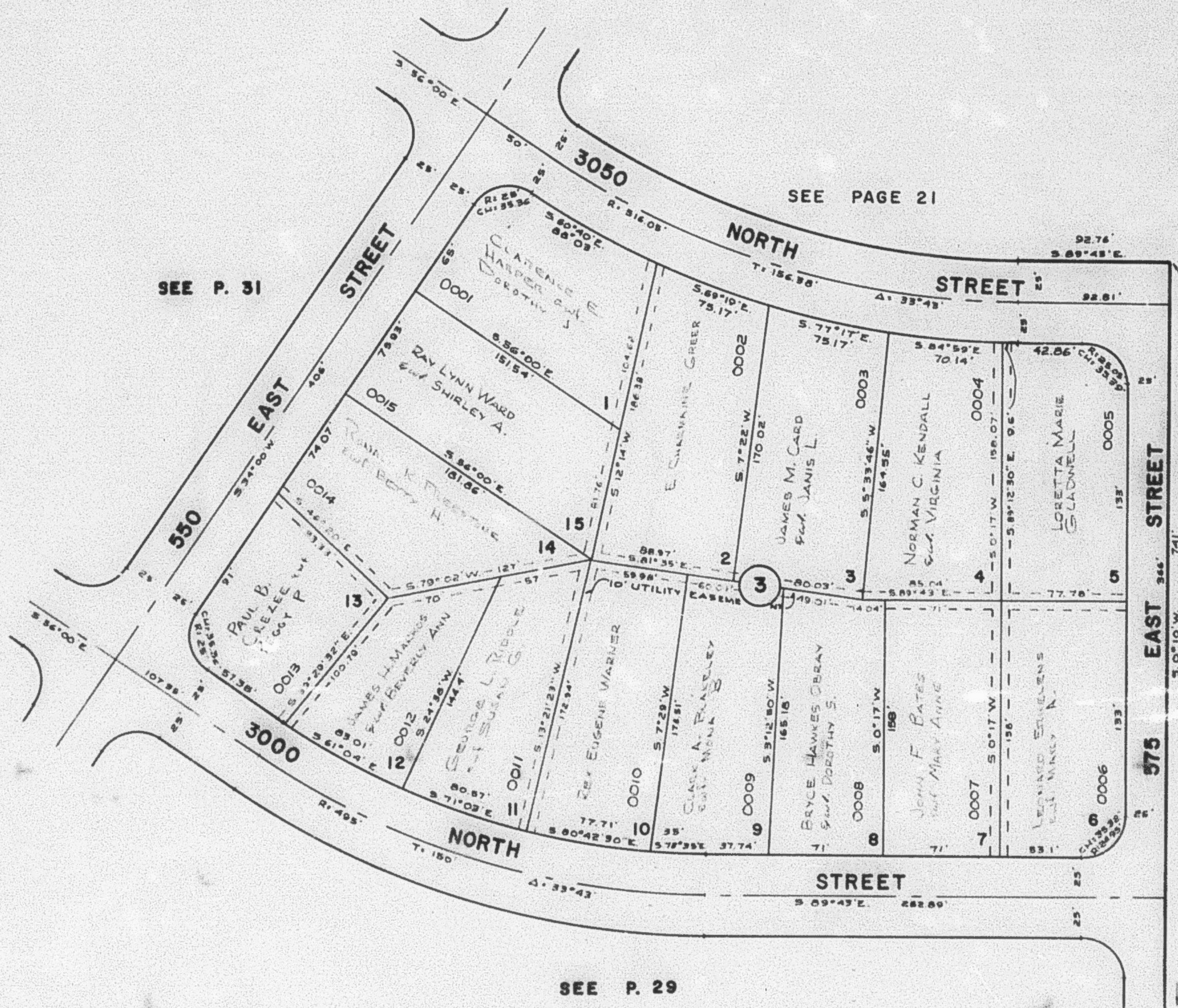
30

TAXING UNIT: 10

BLOCK 3  
IN NORTH OGDEN CITY

PREFIX: 17-030

SCALE 1" = 50'



SEE P. 31

SEE PAGE 21

SEE PAGE

20

SEE P. 29